

Product overview

Tool holders and changing systems

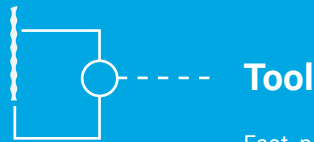
TURNING AND MILLING WITH ADVANCED TECHNOLOGY



Increase in efficiency of manufacturing

Product portfolio tooling systems

EPPINGER's technologies and services
set new standards when it comes to tool
changing and handling.

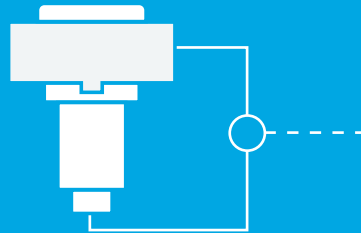


Tool

Fast, precise tool changes,
minimised risk of changeover
and less set-up time required

Changing system

By combining various standard
systems, you can expand your
production range with reduced
tool costs – efficiently, quickly
and safely.

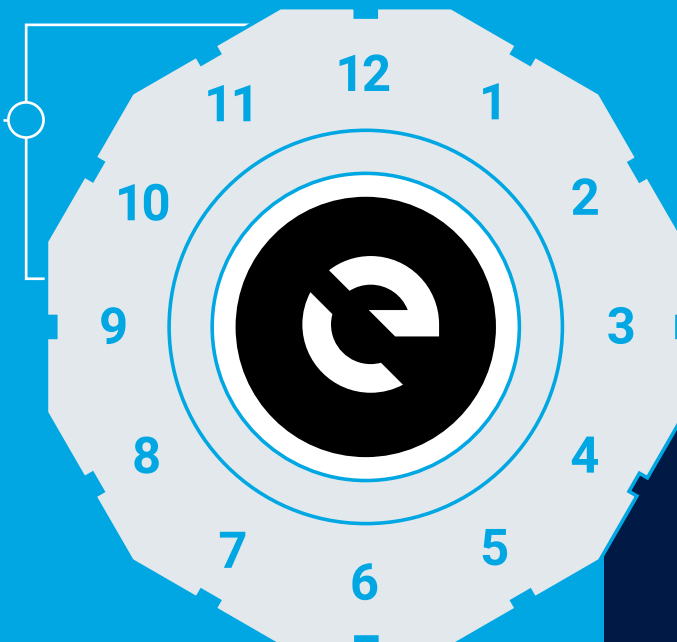


Tool holders

Custom-made to your
requirements, we offer static
and driven holders for all
leading machine interfaces
in the market.

Turrets

EPPINGER systems are
compatible with everything
from conventional turrets to
full-automation-capable,
patented complete systems.



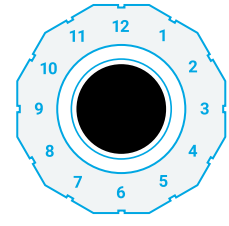
QUICKLOCKBMT®

Automatic clamping
and unclamping by
just pushing a button

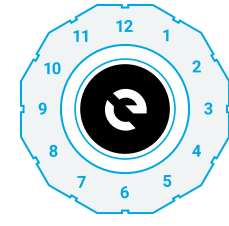
Process reliability, repeatable
accuracy, fast and convenient –
suitable as a basis for fully automated
tool change



Turrets

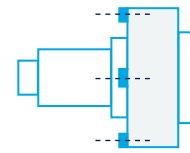


Conventional

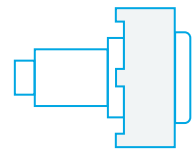


QUICKLOCKBMT®

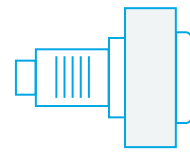
Tool holders



EPPINGER-BMT



BMT



VDI

Changing systems



PRECIFLEX®



PRECIFLEX® T



PSCFLEX



DECOFLEX®

Your EPPINGER advantages

- Repeat accuracy
- Positioning accuracy
- Total runout
- Holder change
- Manual
- Comfort
- Automatic

- Quick-change interface
- Pre-set slot nuts possible
- Cross slot
- Taper roller bearing
- Compensation coupling CC
- Taper system/Contact with the face
- Stability
- High torque transmission

Equipment options

- Static
- Driven
- Straight
- Angular
- Offset
- External and internal cooling
- High-pressure
- Adjustable angle

Machining operations

- Boring
- Turning
- Milling
- Tapping
- Hobbing
- Broaching
- Grooving and separating
- Grinding
- Brushing

	Conventional	QUICKLOCKBMT®	EPPINGER-BMT	BMT	VDI	PRECIFLEX®	PRECIFLEX® T	PSCFLEX	DECOFLEX®
Standard solution for changing tool holders	Standard solution for changing tool holders	Complete system for convenient operations, robot-automation possible	Global standard, highly precise and automatable	Customised EPPINGER-quality OEM solutions	With cylindrical shank, similar to DIN ISO 10889 (DIN 69880)	Industry standard with standard taper, flexible solution	Convenient solution for fixed tools	Adaptation solution focussing on series manufacturing	Miniature range, swiss type lathes, consistent
Repeat accuracy	◆◆◆	◆◆◆	◆◆◆	◆◆	◆	◆◆◆	◆◆◆	◆◆◆	◆◆◆
Positioning accuracy	◆◆◆	◆◆◆	◆◆◆	◆◆	◆	◆◆	◆◆◆	◆◆	◆◆
Total runout			◆◆◆	◆◆	◆	◆◆◆	◆◆	◆◆	◆◆
Holder change	◆	◆◆◆	◆◆◆	◆	◆	◆	◆	◆	◆
Quick-change interface	◆	◆◆◆	◆◆◆	◆	◆◆	◆	◆◆	◆◆	◆◆
Pre-set slot nuts possible	◆*	◆	◆	◆*					
Cross slot	◆*	◆	◆	◆					
Taper roller bearing			◆	◆	◆				
Compensation coupling CC			◆	◆*					
Taper system/Contact with the face			◆	◆	◆	◆	◆	◆	◆
Stability		◆◆	◆◆	◆◆	◆	◆◆	◆◆	◆◆	◆◆
High torque transmission			◆◆	◆◆	◆	◆◆	◆◆	◆◆	◆◆
Static			◆	◆	◆	◆	◆	◆	◆
Driven			◆	◆	◆	◆	◆	◆	◆
Straight			◆	◆	◆	◆	◆	◆	◆
Angular			◆	◆	◆	◆	◆	◆	◆
Offset			◆	◆	◆	◆	◆	◆	◆
External and internal cooling			◆	◆	◆	◆	◆	◆	◆
High-pressure			◆	◆	◆	◆	◆	◆	◆
Adjustable angle			◆	◆	◆	◆	◆	◆*	◆
Boring			◆	◆	◆	◆	◆	◆	◆
Turning			◆	◆	◆	◆*	◆	◆	◆
Milling			◆	◆	◆	◆	◆	◆	◆
Tapping			◆	◆	◆	◆	◆	◆	◆
Hobbing			◆	◆	◆	◆	◆	◆	◆
Broaching			◆	◆	◆	◆	◆	◆	◆
Grooving and separating			◆	◆	◆	◆*	◆	◆	◆
Grinding			◆	◆	◆	◆	◆	◆	◆
Brushing			◆	◆	◆	◆	◆	◆	◆

◆◆◆ Very good ◆◆ good ◆ medium

* Optional or upon request



Toolholding technology

	PRECIFLEX®	PRECIFLEX® T	PSCFLEX	DECOFLEX®
Turning		◆	◆	◆
Collet chuck	◆		◆	◆
PRECIFLEX®/Collet chuck	◆		◆	
Weldon	◆		◆	◆
Whistle notch	◆		◆	◆
Shrinking	◆		◆	◆
Hydraulic expansion	◆		◆	
Cylindrical shank	◆	◆	◆	◆
Shell mill arbor	◆		◆	◆
Boring bar	◆	◆		◆
DECOFLEX®	◆			
PSCFLEX	◆			
Tapping/Grooving		◆	◆	◆

With nearly 100 years of experience in tool holder technology, EPPINGER offers comprehensive system solutions for your requirements.

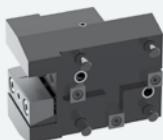
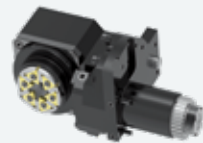
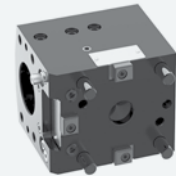
We lead the industry in the development and supply of high-quality and reliable clamping technology for **original equipment customers (OEM)** and **end-user customers**.

Committed to first-class EPPINGER quality, our unique and innovative products guarantee process-reliability and efficient production.



For all leading machine OEMs

ACCUWAY · BARUFFALDI · BIGLIA · CITIZEN · DMG · DN SOLUTIONS · EMAG · EMCO · GOODWAY · HAAS
HARDINGE · HWACHEON · HYUNDAI WIA · INDEX · MAZAK · MIYANO · MURATA · NAKAMURA-TOME · OKUMA
ROMI · SAUTER · SMART · SMEC · SPINNER · STAR · TAKAMAZ · TAKISAWA · TONGTAI · TORNOS · TSUGAMI · WFL · YCM



**Revolutionise your
manufacturing
processes and rely on
our expertise.**

Contact us for
further information.

ESA EPPINGER GmbH
Breitwiesenweg 2-8 · 73770 Denkendorf
Phone: +49 711 934 934-0
info@eppinger.de · www.eppinger.de